

Making Two-Tone Text

By Kim Hill

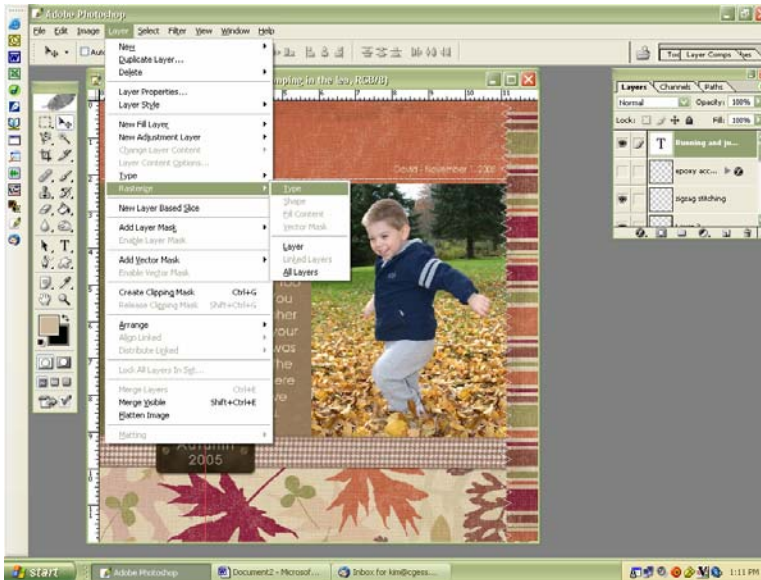
If you have any questions about this tutorial, please contact me at kim@cgsentials.com.

Have you ever spanned journaling across a layout with a few paper colors? If so, you know how hard it can be to read the journaling one paper to the next. One way to fix that is to use two-tone text.

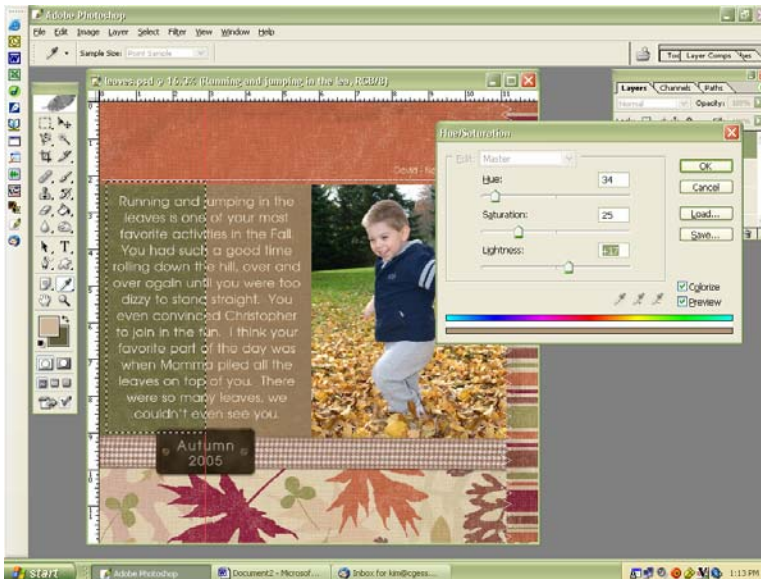
Once you have your layout made, type in your journaling. Here's mine so far.



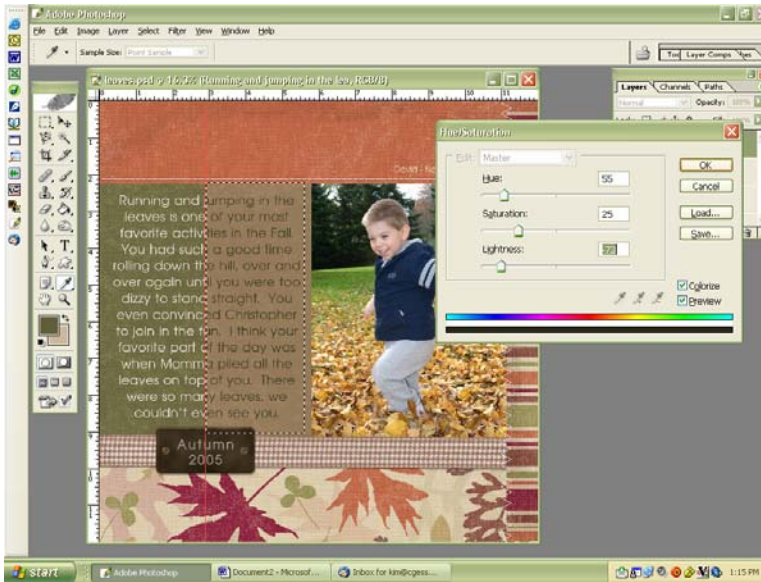
I want the text on the brown paper to be green, and the text on the green paper to be beige. The simplest way to do this is to first rasterize your type by clicking on Layer / Rasterize / Type. This will make your type editable.



Now go to your color palette at the bottom of your tool box and select the two colors you want. I'm using beige and a deep olive green. Put the color you want on the left side of your text in the foreground of your paint palette. Now grab your selection tool and make sure it is the rectangular marquee. Draw a box around the left half of your text. Now click on Image / Adjustments / Hue Saturation. Check the Colorize box and then move the lightness slider to where it looks like the color you chose.



Repeat the above steps to do the right side. First use your rectangular marquee to select the right portion of text. Switch your color palette to the second color you chose. Then click on Image / Adjustments / Hue Saturation. Check the Colorize box and then move the lightness slider to where it looks like the color you chose.



And here is what the completed two-tone text looks like.

