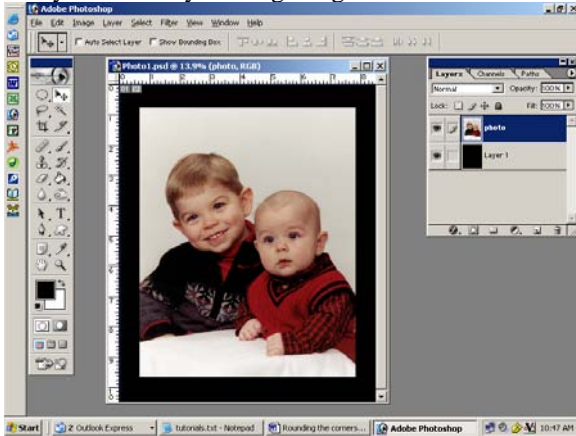


Rounding the corners of photos and mattes

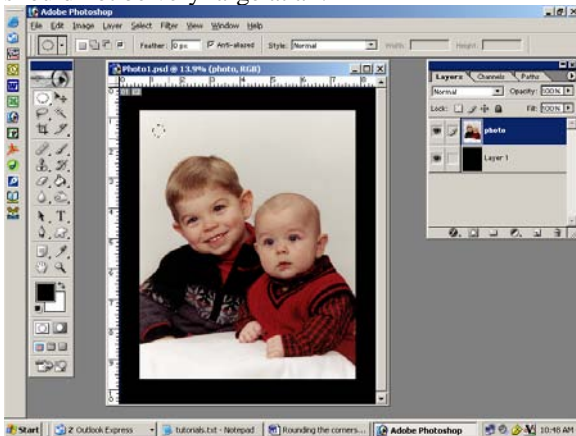
By Kim Hill

If you have any questions about this tutorial, please contact me at kim@cgesentials.com

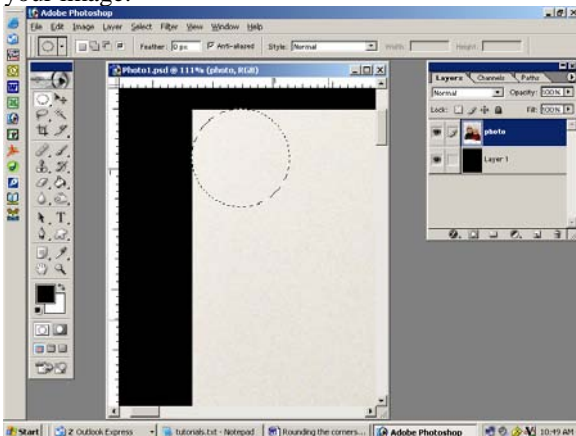
Open the image you want to use. You will want to duplicate the image by right-clicking on it in your layers palette and clicking duplicate layer. Place the original in the trash can. Now save your document as a new name and have the extension as PSD so that it stays a workable format. I have placed my image on a larger canvas with a black background so you can see what I'm doing more easily. Here's my starting image.



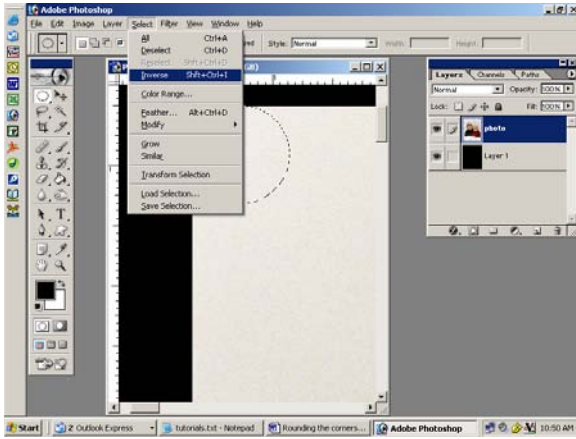
Now grab your square marquee tool from the tool palette (it's the dashed square next to the arrow) and change it to a circle. Make a small circle on your photo by holding the Shift key (keeps your circle perfectly proportioned) and dragging your mouse. The circle should not be very large at all.



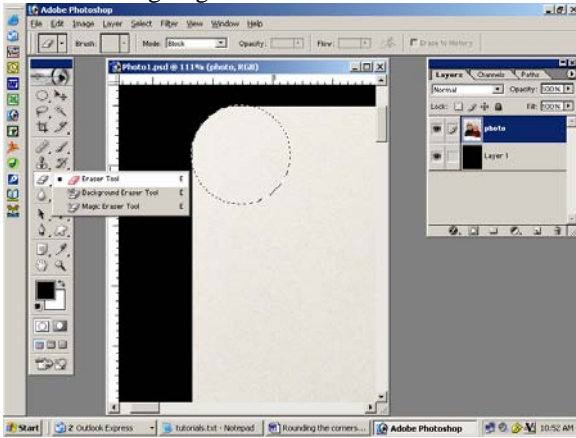
Get your magnifying lens out and zoom in on the top left corner. Now get your marquee tool and drag that circle over to the corner of your image.



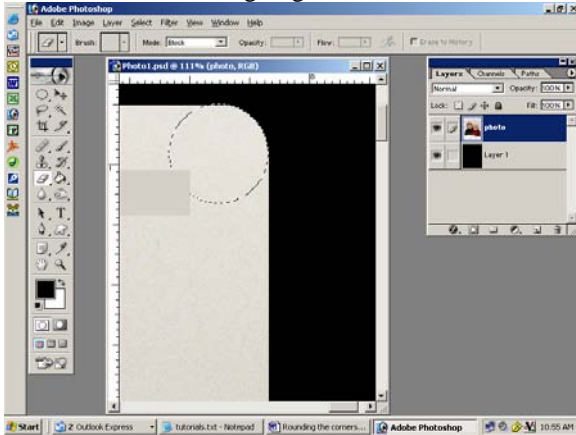
Now click on Select/Inverse.



You are now going to erase the area OUTSIDE the circle so that you no longer have that hard corner.



Leave the circle selected and use your marquee tool to move the circle to the top right corner by clicking and dragging it with your mouse. You are now going to erase the area that hard corner. Repeat for the remaining two corners.



Here's the final piece.

