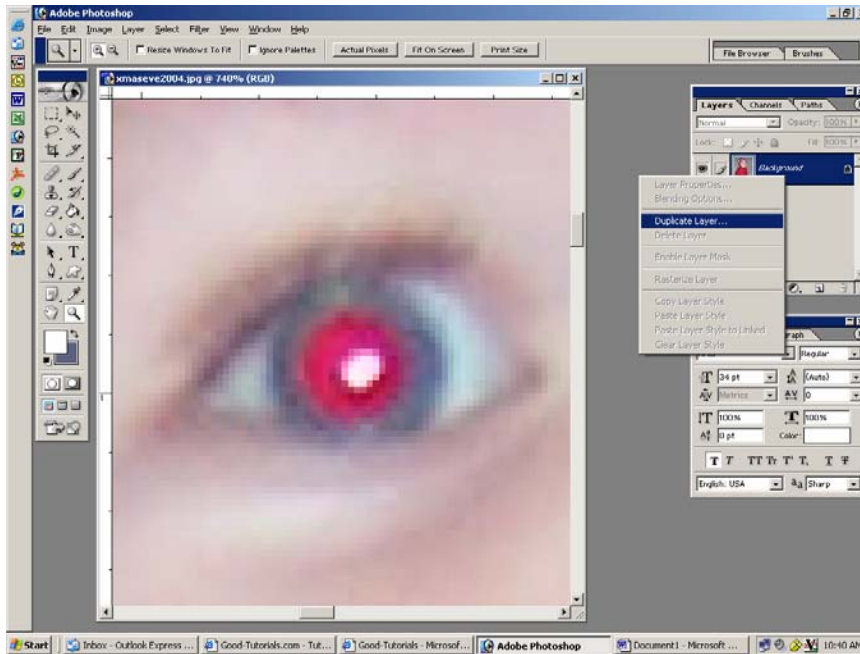


RED EYE CORRECTION – PHOTOSHOP TUTORIAL

By Kim Hill

If you have any questions about this tutorial, please contact me at kim@cgsentials.com

Open the photo which needs red eye correction and, using your magnifying lens (in the tool palette on the left of your screen), zoom in very close on the left eye. Duplicate the photo by right-click on the photo in your layers palette and clicking “Duplicate Layer”. You can now discard edit the new layer. If, at any time you want to start over, just delete the duplicated layer and start at the beginning of this tutorial again.



In your tool palette, make your foreground color black and your background color white. Now select a soft round brush, rather small – maybe 7-9 diameter. Carefully paint black onto the red area of the eye. Try not to get the paint on the other areas. If you need to use a smaller brush and zoom in closer, then go right ahead. Sometimes doing the correction one pixel at a time is best.



You will want to soften the edges between the black pupil and the actual eye color. To do this, select your blur tool (it is the tear drop icon in your tool palette on the left of your screen). Adjust the diameter of the blur tool to make it small enough to soften just the edges between the two colors.

Zoom out and take a look at it. If you are happy, go ahead and repeat the above steps to correct the other eye. You may need to change your paint color to white and add a drop or two on the highlights. Then soften with the blur tool a bit. When you're done, it should look something like this.

