

PENCIL DRAWING – PHOTOSHOP TUTORIAL

By Kim Hill

If you have any questions regarding this tutorial, feel free to contact me at kim@cge essentials.com

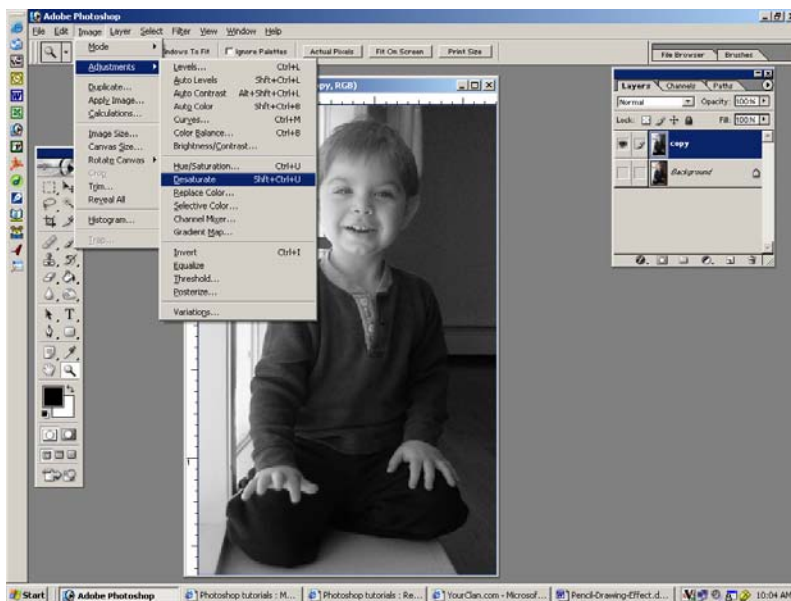
Change any image to a pencil drawing with just a few simple steps.

Start by choosing an image. Open it in PhotoShop. In the layers palette, right click on the image layer and duplicate it. Rename the new layer “copy”.

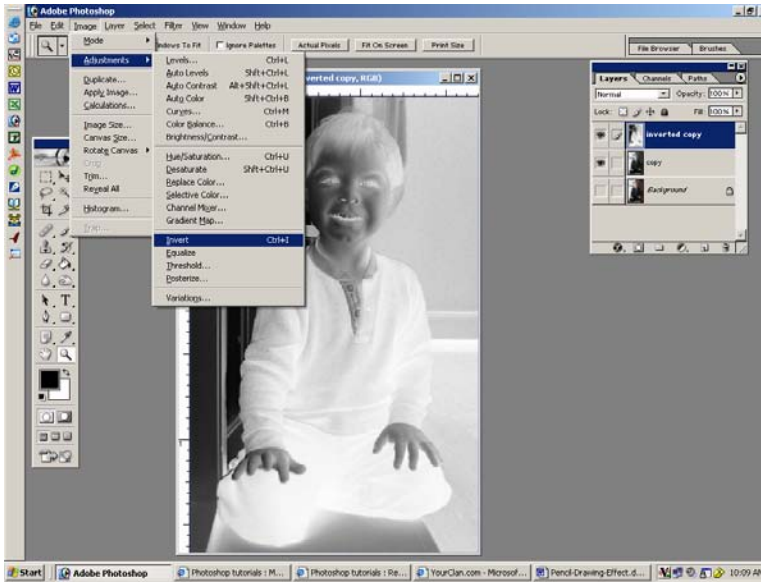


In the layers palette, select the original background layer. There is an eyeball on the left – turn this off by clicking on it. This will make your original layer not editable and not viewable. You will now only see the copy layer you just made.

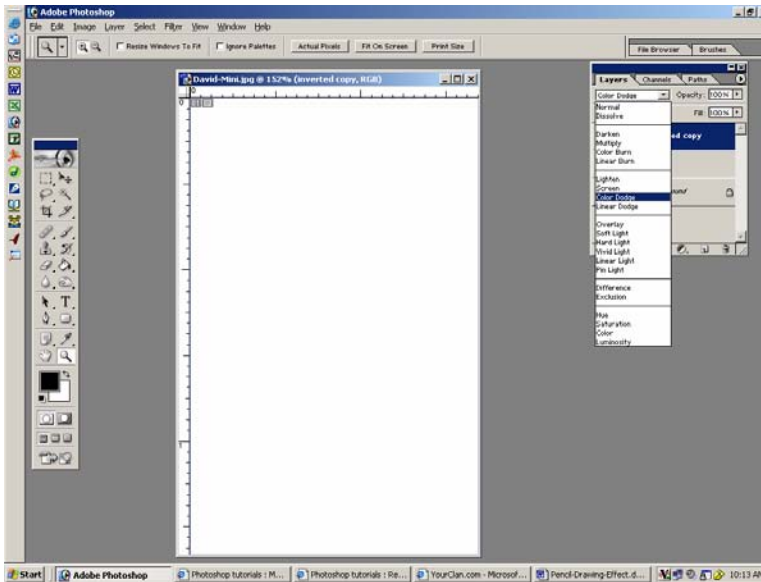
Okay, now select the copy layer in your layers palette. Then click on Image/Adjustments/Desaturate. This will make your copy layer black & white.



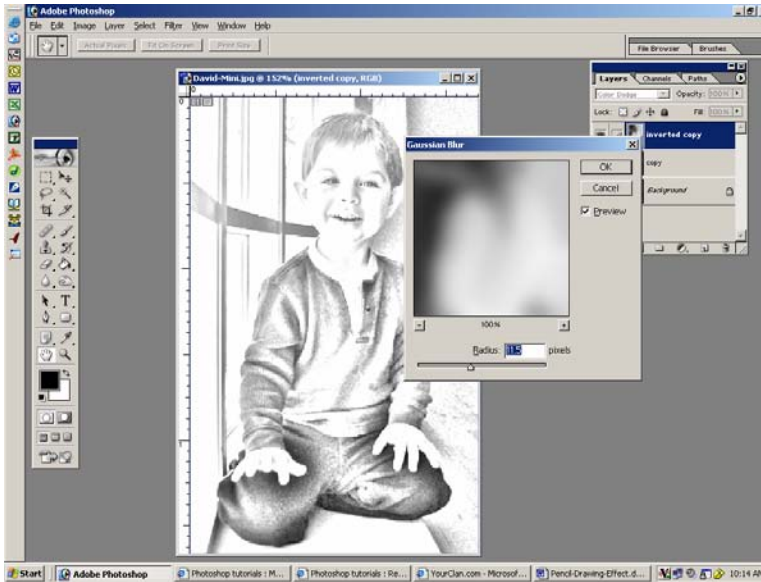
Now you will need to duplicate this desaturated copy. Go to your layers palette and click on the copy layer. Right click on it and then click on duplicate. Rename this new layer “inverted copy”. With the inverted copy highlighted in your layers palette, click on Image/Adjustments/Invert. This will make your inverted layer look like a photo negative.



Click on the blending options in your layers palette and change this layer to Color Dodge. This layer will now be completely white.



Now click on Filter/Blur/Gaussian Blur. You will want to play around with the settings (somewhere between 5 and 15) until you are satisfied with the result.



All done! Here's the finished result.

