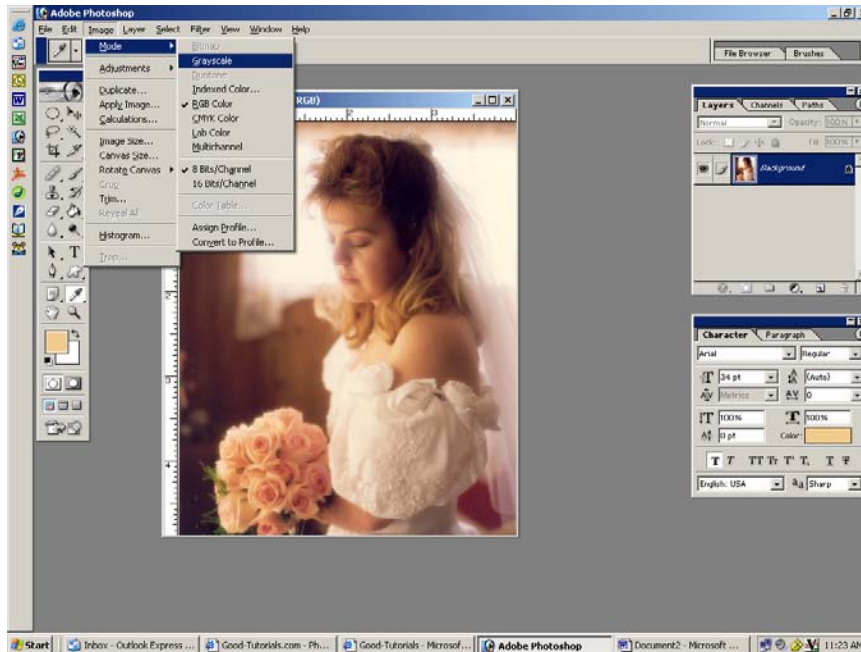


## DUO-TONE – PHOTOSHOP TUTORIAL

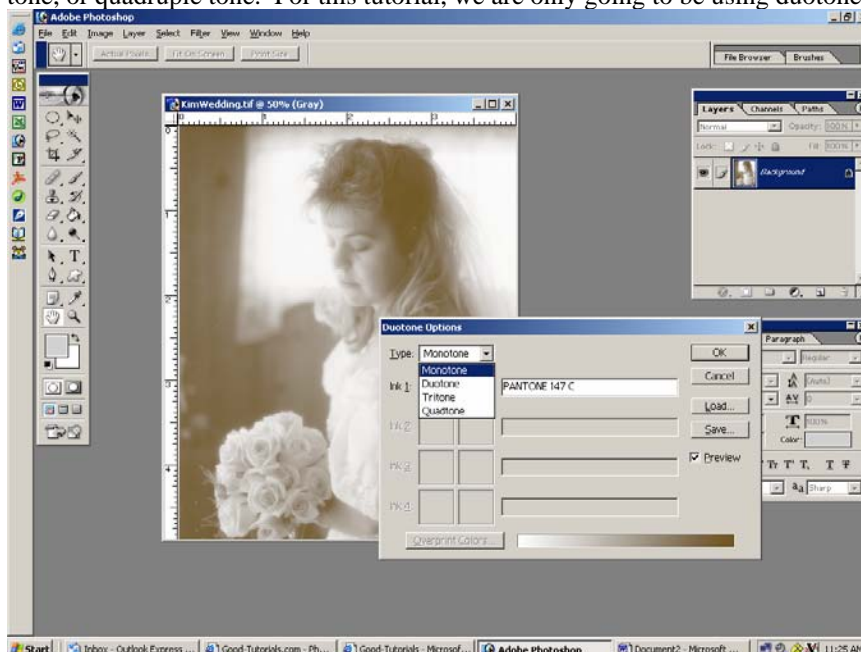
By Kim Hill

If you have any questions, please contact me at [kim@cgsentials.com](mailto:kim@cgsentials.com)

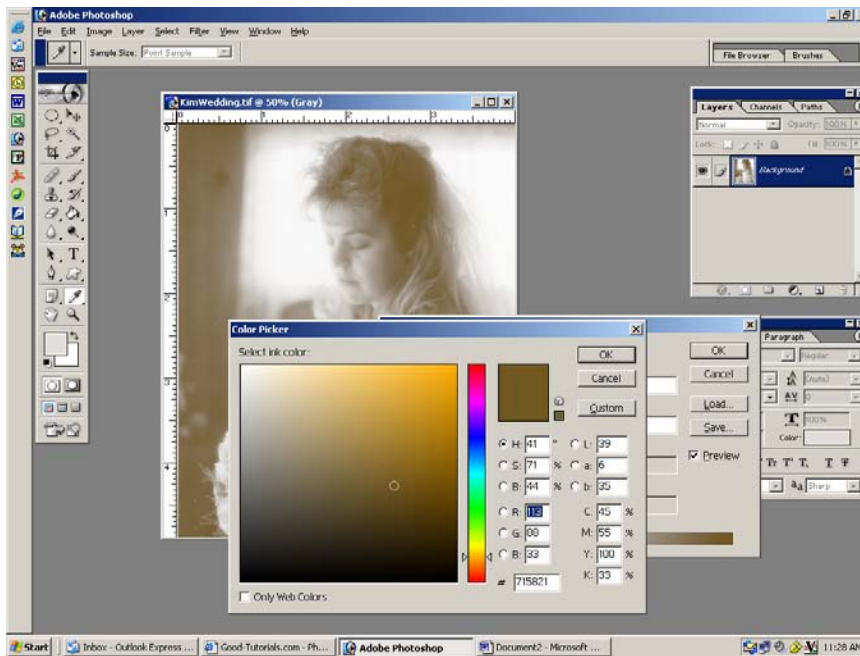
Open the photo you would like to alter. Change the photo to black and white by clicking on Image/Mode/Grayscale. Be sure that RGB is checked and 8 bits per channel is also checked. A pop-up window will ask if you want the color information to be discarded. Click OK.



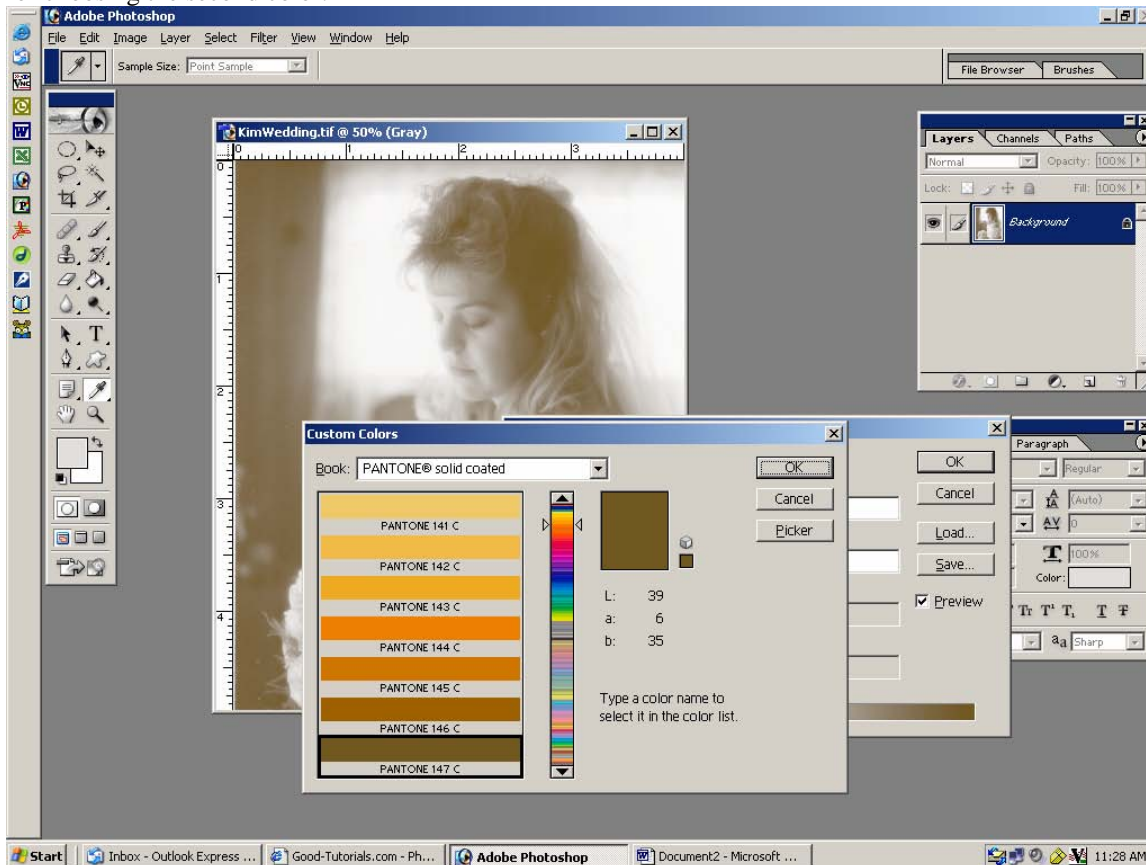
Now you will get to choose the two colors you would like your photograph to be. Do this by clicking on Image/Mode/Duotone. A new window will open. In that window is a drop down tab for monotone, duotone, tripe tone, or quadruple tone. For this tutorial, we are only going to be using duotone.



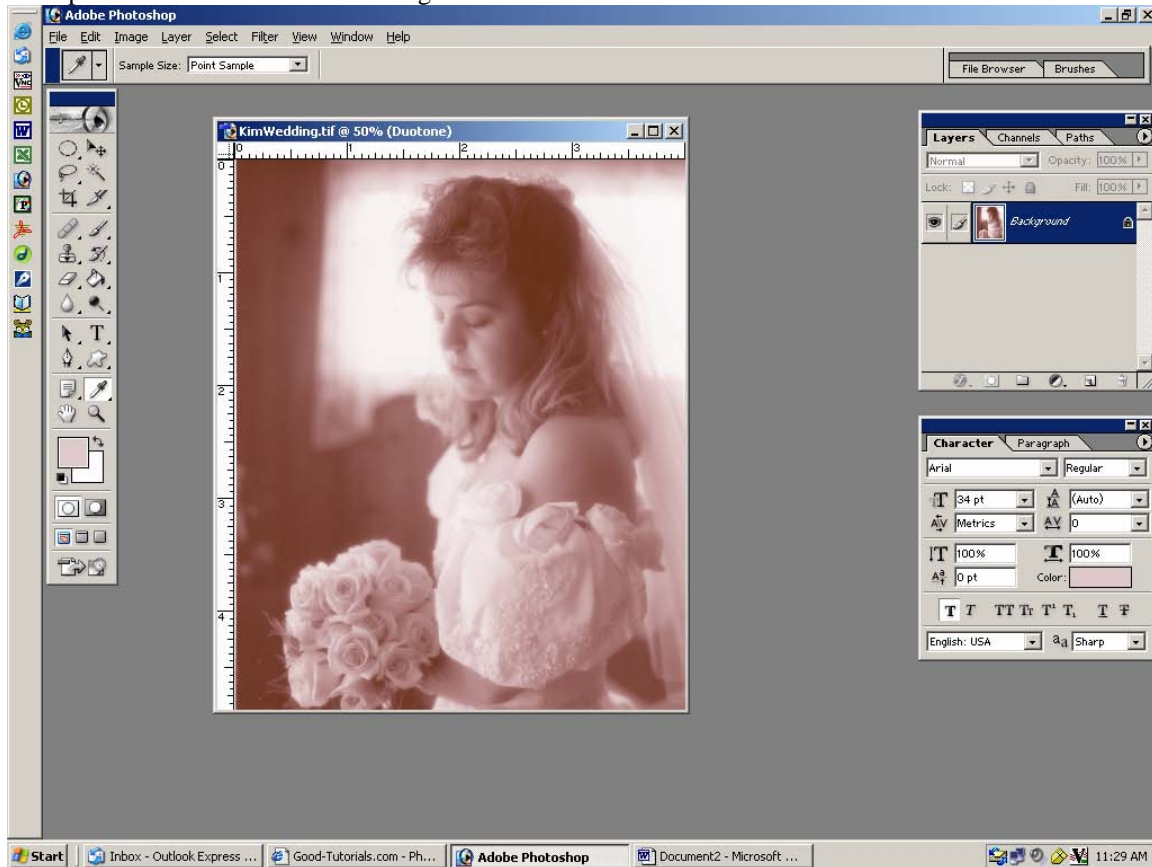
Two boxes will open up asking you to select colors. You want two contrasting colors. I will be selecting a shade of brown and a shade of pink. To change the color, simply place your mouse on the first color and click on it. A color selector window will pop open.



In that window, click on custom so that you will be working with Pantone Colors. Slide the color bar up and down until you get to a color you like. Then click on that color in the bigger preview pane and click OK. Repeat this step for choosing the second color.



Your photo should now look something like this:



If you like this technique, you can apply it to 3 or even 4 colors simply by choosing triple tone or quadruple tone and then following the above steps to select the additional 3<sup>rd</sup> and 4<sup>th</sup> colors.